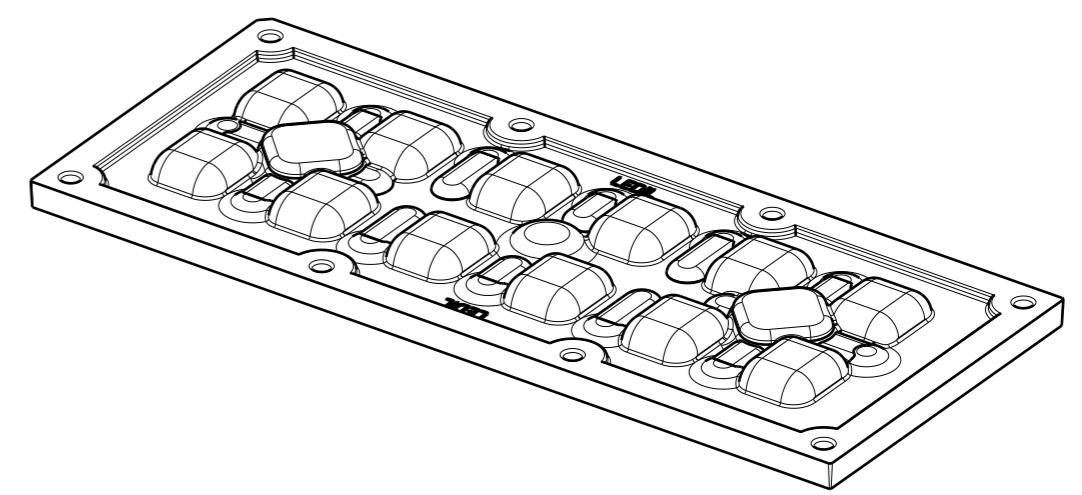
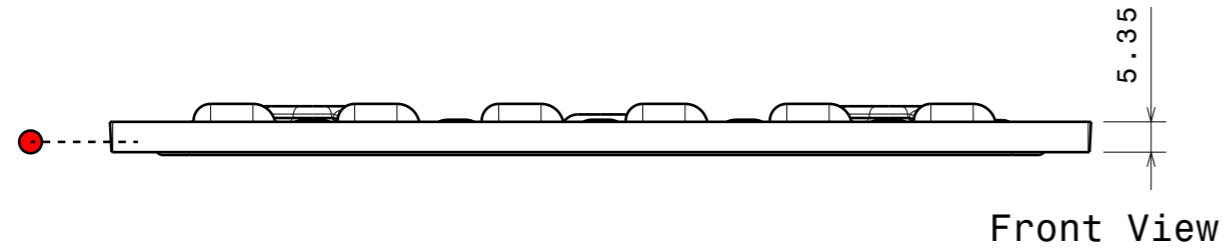


Bottom View

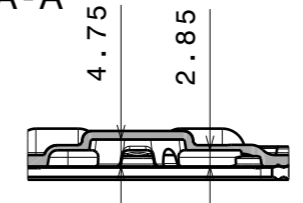


Isometric View



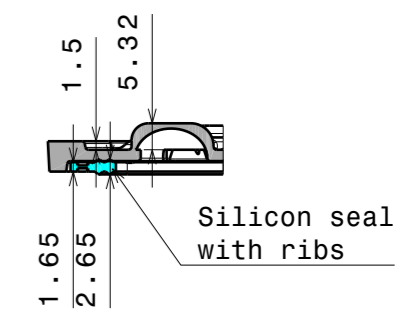
Front View

Section view A-A

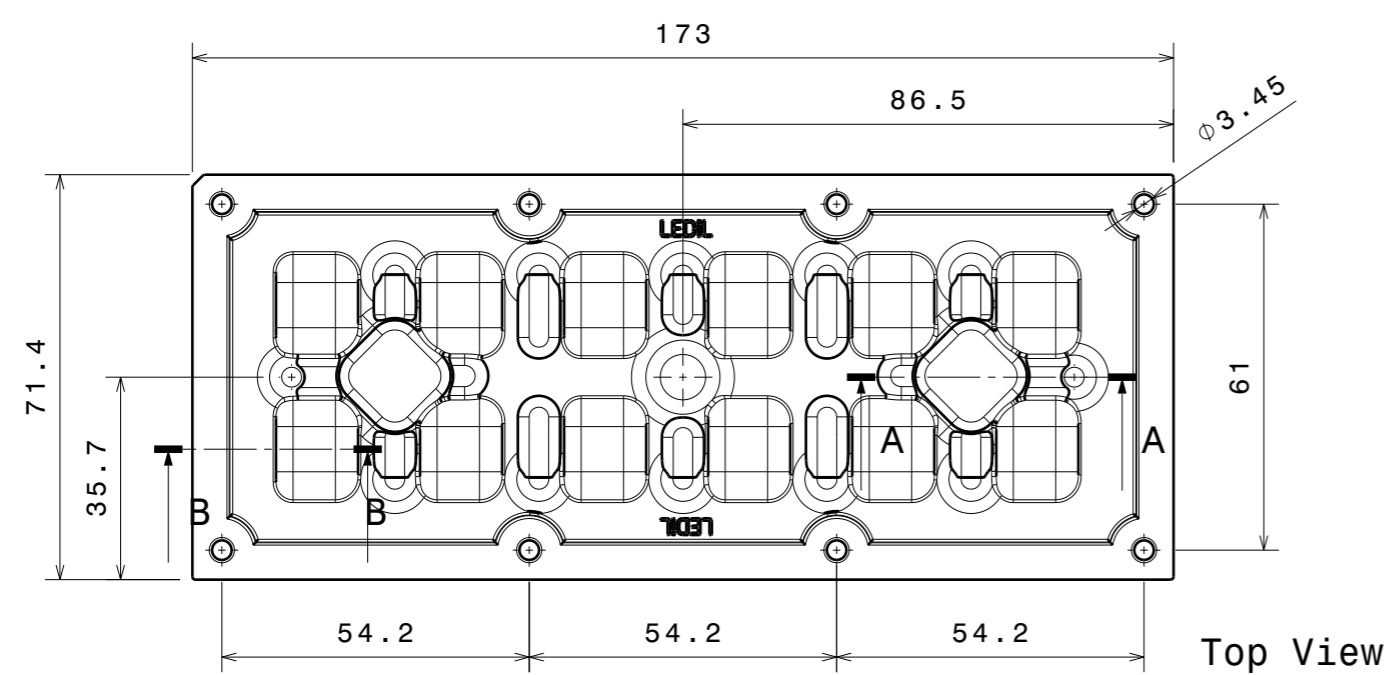


Pocket for wiring and screws

Section view B-B



Silicon seal with ribs



Top View

CS19240_AMBER-IP-2X6-T2
COMPONENTS

INDEX	PART	TYPE	COUNT	MATERIAL	COLOR / COATING
1	C19239_AMBER-IP-2X6-T2	LENS	1	PMMA	Amber
2	C14018_2X6-SEAL25	SEAL	1		

MECHANICAL DRAWING		LEDiL
PRODUCT AMBER		
Plastic moulding general tolerances according to DIN 16901-130 and applies if not otherwise shown in the drawing. Silicone moulding general tolerances according to ISO 3302-1 Class M3 and applies if not otherwise shown in the drawing.	FIRST ANGLE PROJECTION: 	This drawing is the property of LEDiL Oy. It may not be copied or otherwise distributed without prior written permission from LEDiL Oy.
SCALE 3:4	WEIGHT -	A3 SHEET 1/1

- Notes**
- PCB or heatsink level.
 - LED location
 - Ensure LED fitting from a product specific 3D model available from www.ledil.com
 - For more details about installation please see LEDiL Installation Guide on www.ledil.com